



Magswitch Technology, Inc.
 8774 Yates Dr. Suite 140
 Westminster, CO 80031
 Magswitch.com.au
 303-468-0662

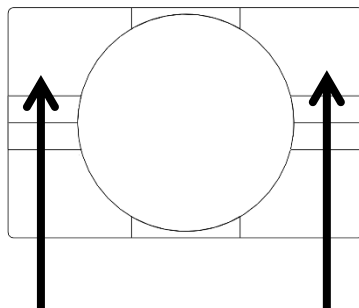
Magswitch MagSquare 165

P/N: 8100494

Welders and fabricators are raving about all the uses, convenience and time savings with Magswitch MagSquares. MagSquares are extremely powerful on off magnetic blocks with strong holding force available on all sides. Welders have never enjoyed this complete control over incredibly strong magnets (1,000 lbs (454 kg) on the MagSquare 1000). You can precisely position the MagSquare and material, and then turn the magnet on. MagSquares feature multi-plane workholding capability. It takes away the need for time consuming manual clamping on so many jobs, and works anywhere there is steel; you don't need an edge like you do with C-Clamps. All MagSquares are machined at 90 degrees, have pre tapped holes on all sides for mounting tools, jigs and fixtures. Fast 180 degree turn of the knob turns the MagSquare on and off. When off, nothing sticks to them. Once you understand all the uses, the time savings in set ups, and the ability to control these powerful magnetic blocks – you will want the entire range.



WARNING!
Do Not Operate Unless In
Contact With Ferrous Target



WORKING SURFACE

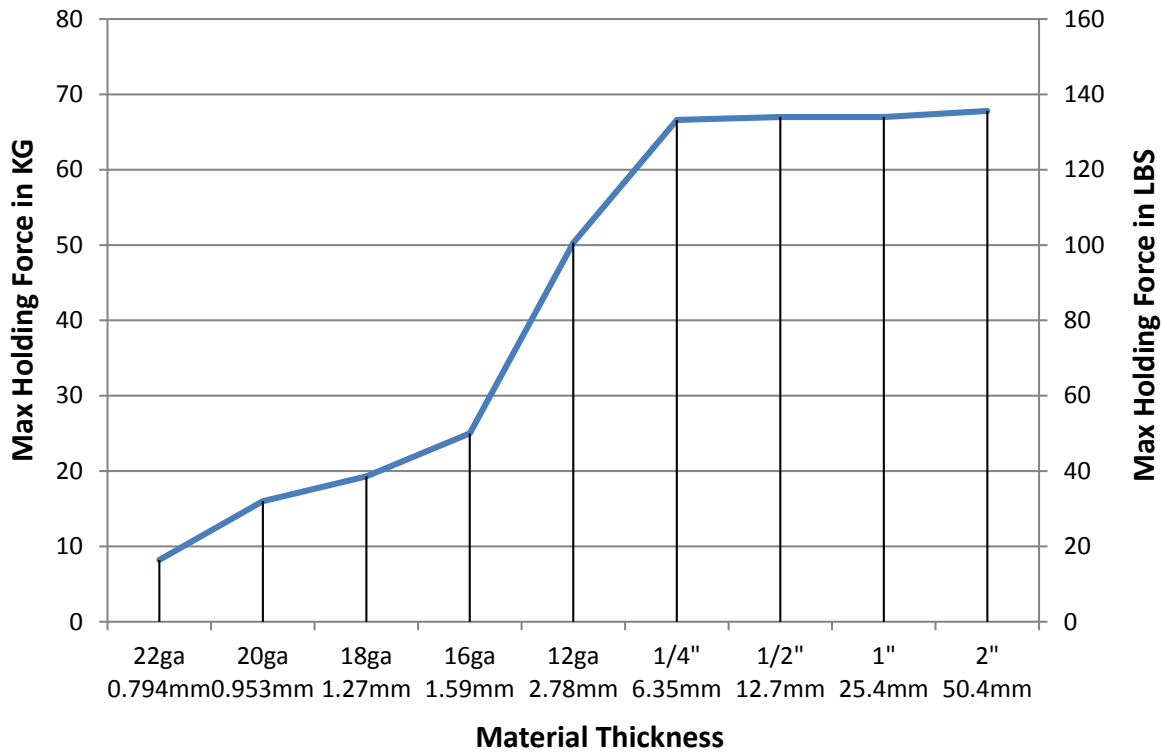
SPECIFICATIONS	
P/N: 8100494 - MAGSWITCH MagSquare 165	
Max Breakaway*	150 lbs/68 kg
Full Saturation Thickness	0.25"/ 6.35 mm
2:1 Shear Working Load*	18.5 lbs/8.4 kg
Net Weight	0.5 lbs/0.23 kg
Overall Height	64.25 mm
Magnetic Pole Footprint	48mm x 31mm



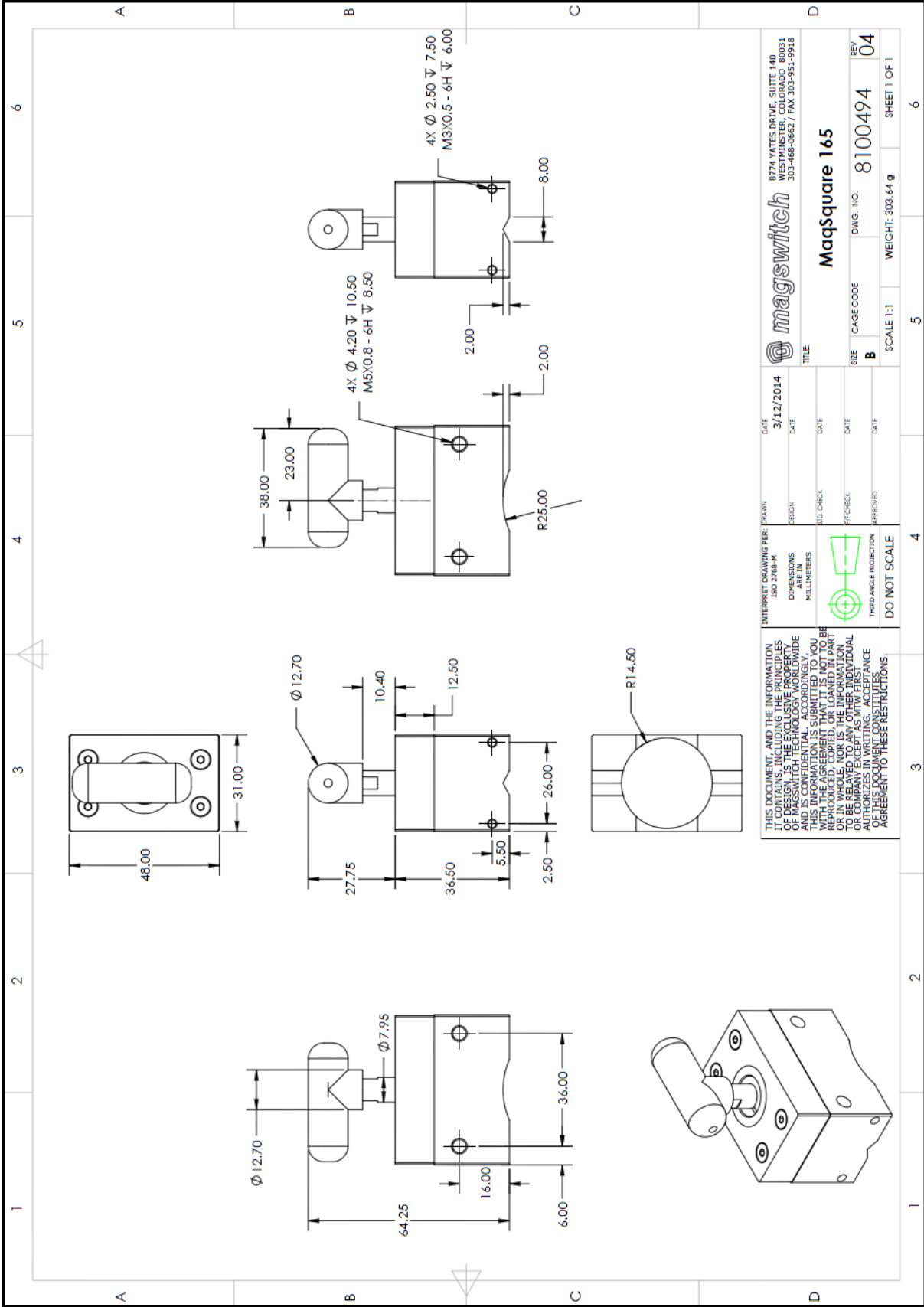
Part Number 110918
 Revision Date: March 14, 2014

* Max Breakaway determined in laboratory environment on 2" thick SAE1018 Steel with surface roughness 63 micro inches. Many factors contribute to the actual breakaway force in each application. Always test the magswitch in each application before deployment. Refer to the magswitch information booklet for more information.

Magswitch MagSquare 165 Breakaway vs. Thickness



Part Number 110918
Revision Date: March 14, 2014



		8774 YATES DRIVE, SUITE 140 WILSONVILLE, OR 97158 303-468-9662 / FAX 303-951-9918	
DATE	3/12/2014	TITLE	MaqSquare 165
DESIGN		SIZE	B
3RD CHECK		CAGE CODE	8100494
2ND CHECK		DWG. NO.	8100494
1ST CHECK		REV	04
APPROVES		SCALE	1:1
THIRD ANGLE PROJECTION	DO NOT SCALE	WEIGHT	303.64 g
			SHEET 1 OF 1

THIS DOCUMENT AND THE INFORMATION IT CONTAINS, INCLUDING THE PRINCIPLES OF DESIGN, IS THE EXCLUSIVE PROPERTY OF MAGSWITCH TECHNOLOGY CORPORATION. THIS INFORMATION IS SUBMITTED TO YOU WITH THE AGREEMENT THAT IT IS NOT TO BE REPRODUCED OR TRANSMITTED IN ANY FORM OR BY ANY MEANS, ELECTRONIC OR MECHANICAL, INCLUDING PHOTOCOPYING, RECORDING, OR BY ANY INFORMATION STORAGE AND RETRIEVAL SYSTEM, WITHOUT THE WRITTEN PERMISSION OF MAGSWITCH TECHNOLOGY CORPORATION. THIS INFORMATION IS NOT TO BE RELAYED TO ANY OTHER INDIVIDUAL OR COMPANY EXCEPT AS MAY BE NECESSARY FOR THE PERFORMANCE OF YOUR DUTY IN CONNECTION WITH THIS DOCUMENT. CONSTITUTES AGREEMENT TO THESE RESTRICTIONS.



Part Number 110918
 Revision Date: March 14, 2014