



Magswitch Technology, Inc.
 8774 Yates Dr. Suite 140
 Westminster, CO 80031
 Magswitch.com.au
 303-468-0662

Magswitch 90 Degree Angle 400

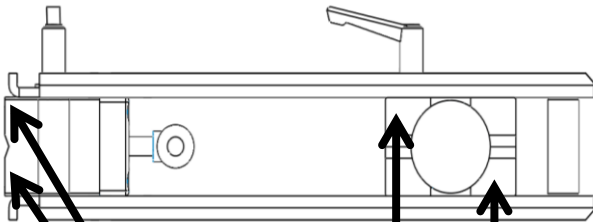
P/N: 8100454

Magswitch 90 degree Welding Angles are the most versatile in the market. Featuring the benefits of Magswitch including incredible power and precision control, the Magswitch 90 degree angles are easy to use, and can be used with larger and heavier steel. All Magswitch 90 degree angles allow you to reposition the magnets up or down on each axis, or reverse from outside to inside. If you want more strength, just add more Magswitch MagSquares.



WARNING!
Do Not Operate Unless In
Contact With Ferrous Target

| SPECIFICATIONS | |
|---|------------------|
| P/N: 8100454 - MAGSWITCH 90 Degree Angle 400 | |
| Max Breakaway* | 400 lbs/181 kg |
| Full Saturation Thickness | 0.1345 in/3.43mm |
| 2:1 Shear Working Load* | 20 lbs/9 kg |
| Net Weight | 6.2 lbs/2.8 kg |
| Overall Height | 181 mm |
| Magnetic Pole Footprint | 64mm x 41.26mm |

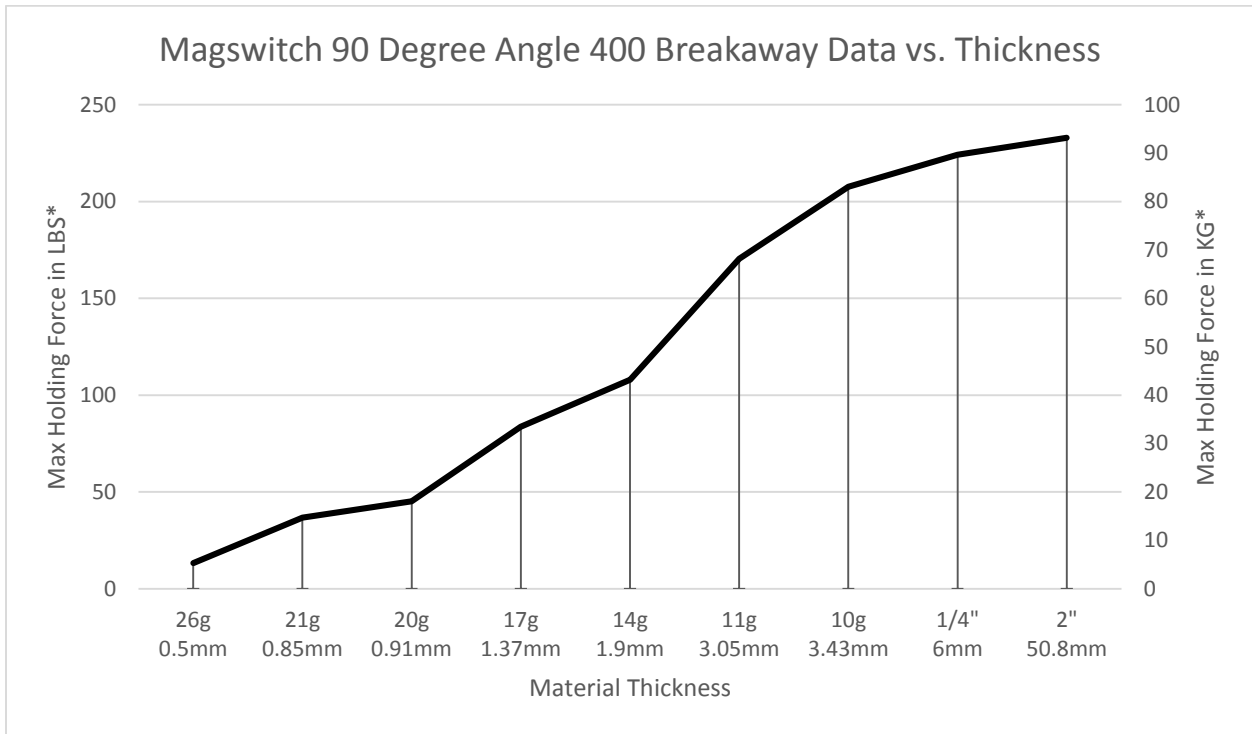


WORKING SURFACE



Part Number 110692
 Revision Date: June 26, 2012

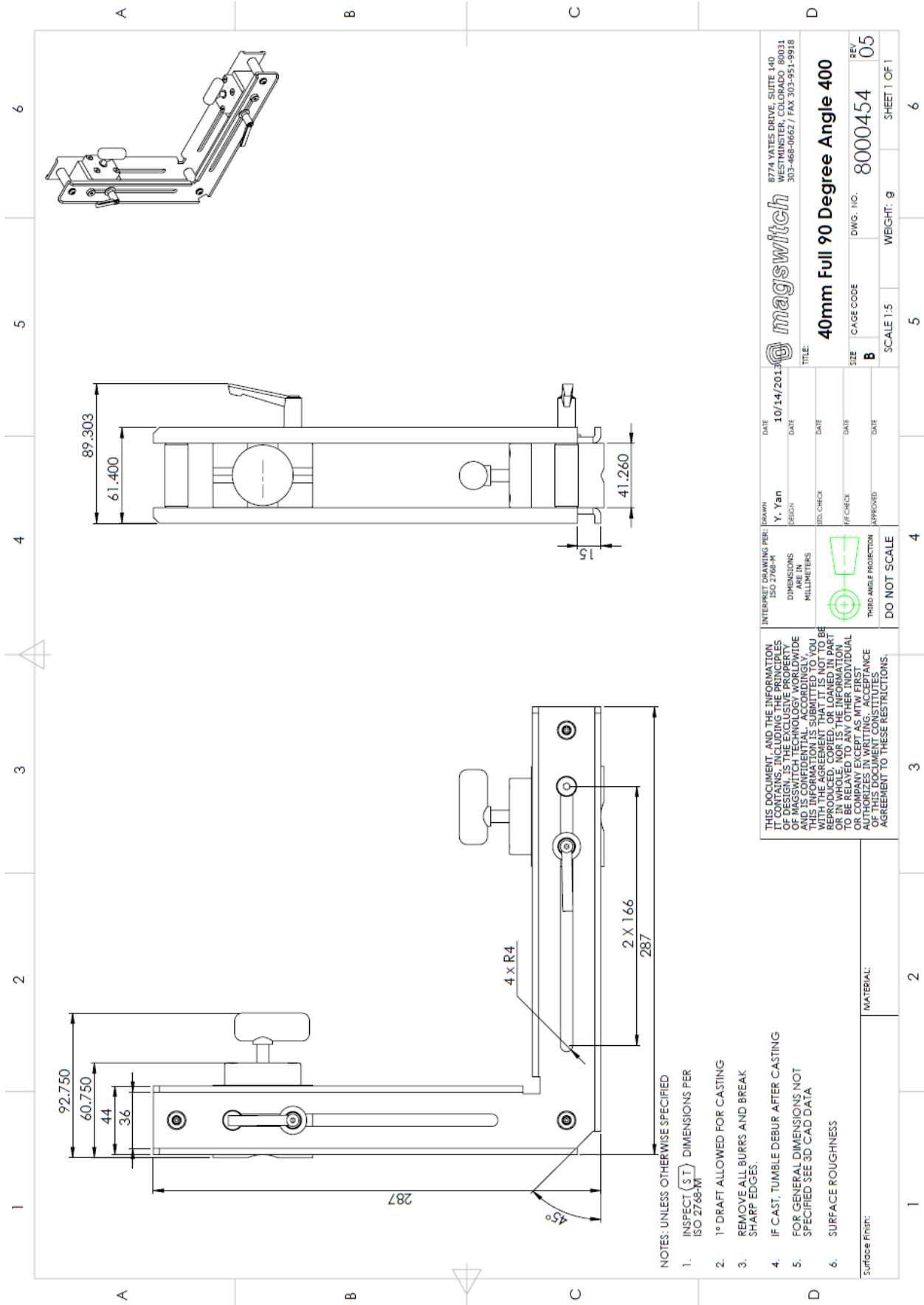
* Max Breakaway determined in laboratory environment on 2" thick SAE1018 Steel with surface roughness 63 micro inches. Many factors contribute to the actual breakaway force in each application. Always test the magswitch in each application before deployment. Refer to the magswitch information booklet for more information.



Part Number 110692
 Revision Date: June 26, 2012



Part Number 110692
 Revision Date: June 26, 2012



THIS DOCUMENT, AND THE INFORMATION IT CONTAINS, INCLUDING THE PRINCIPLES OF DESIGN, IS THE SOLE PROPERTY OF MAGSWITCH. IT IS CONFIDENTIAL, ACCORDINGLY, THIS INFORMATION IS SUBMITTED TO YOU ON A CONFIDENTIAL BASIS AND IS NOT TO BE REPRODUCED, COPIED, OR LOANED IN PART OR IN WHOLE. NOR IS THE INFORMATION TO BE RELAYED TO ANY OTHER INDIVIDUAL OR ENTITY, EXCEPT AS WITH EXPRESS WRITTEN PERMISSION. YOUR ACCEPTANCE OF THIS DOCUMENT CONSTITUTES AGREEMENT TO THESE RESTRICTIONS.

- NOTES: UNLESS OTHERWISE SPECIFIED
1. INSPECT (S,T) DIMENSIONS PER ISO 2768-M
 2. 1° DRAFT ALLOWED FOR CASTING
 3. REMOVE ALL BURRS AND BREAK SHARP EDGES.
 4. IF CAST, TUMBLE DEBUR AFTER CASTING
 5. FOR GENERAL DIMENSIONS NOT SPECIFIED SEE 3D CAD DATA
 6. SURFACE ROUGHNESS

Surface Finish: _____
 MATERIAL: _____

8774 YATES DRIVE, SUITE 140
 WESTMINSTER, COLORADO 80031
 303-468-0662 / FAX 303-951-9918

magswitch

40mm Full 90 Degree Angle 400

CAGE CODE: B
 DWG. NO.: 8000454
 REV: 05

SCALE 1:1.5
 WEIGHT: g
 SHEET 1 OF 1