



Magswitch Technology, Inc.  
 1355 Horizon Ave  
 Lafayette, CO 80026  
 Magswitch.com.au  
 303-468-0662

# Magswitch 400 Dual Fixed Manual Hand Lifter

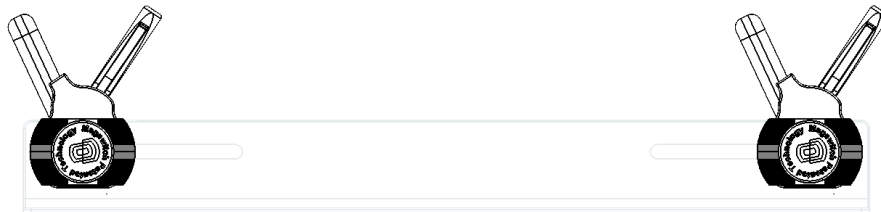
## P/N: 8100822

The Magswitch fixed manual hand lifter series allows for safe and convenient lifting. With an ergonomic fixed handle, the 400 dual hand lifter features double side-actuation levers with locking mechanisms that prevent accidental release. It is perfect for handling sharp or dirty steel or scrap. It can be used for dragging or handling small steel sheet.

**WARNING!**  
**Do Not Operate Unless In Contact With Ferrous Target**



SPECIFICATIONS	
<b>P/N: 8100822 - MAGSWITCH 400 DUAL FIXED MANUAL HAND LIFTER</b>	
Max Breakaway*	780 lbs/363 kg
Full Saturation Thickness	3/8in / 9.5mm
Net Weight	5.9 lbs/2.7 kg
Overall Height	5.25in/133.3mm
Magnetic Pole Footprint	67mm x 42 mm

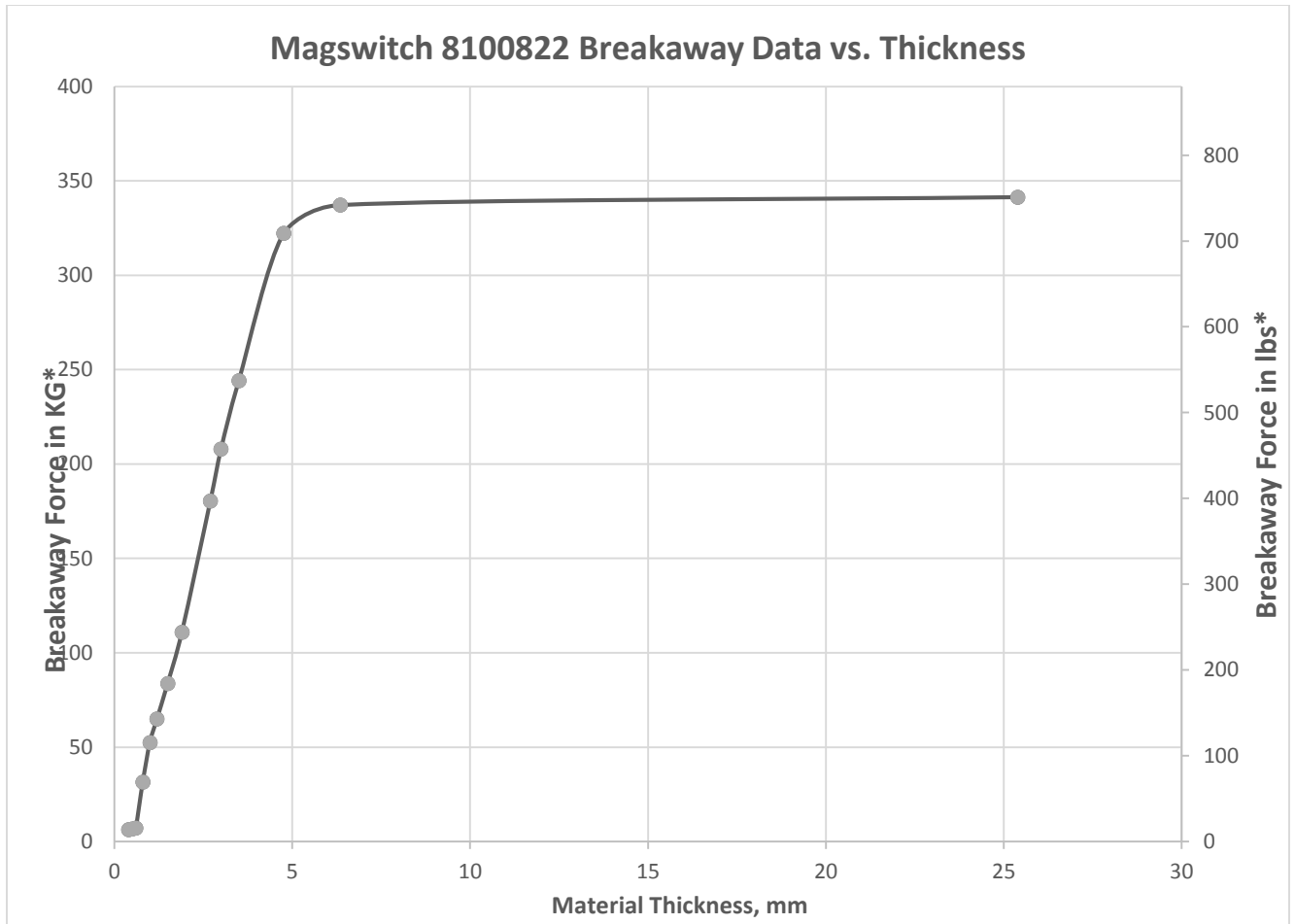


**WORKING SURFACE**  
**BLACK=BEST GRAY=MODERATE**



Part Number 1101209  
 Revision Date: March 29, 2016

\* Max Breakaway determined in laboratory environment on 2" thick SAE1018 Steel with surface roughness 63 micro inches. Many factors contribute to the actual breakaway force in each application. Always test the magswitch in each application before deployment. Refer to the magswitch information booklet for more information.

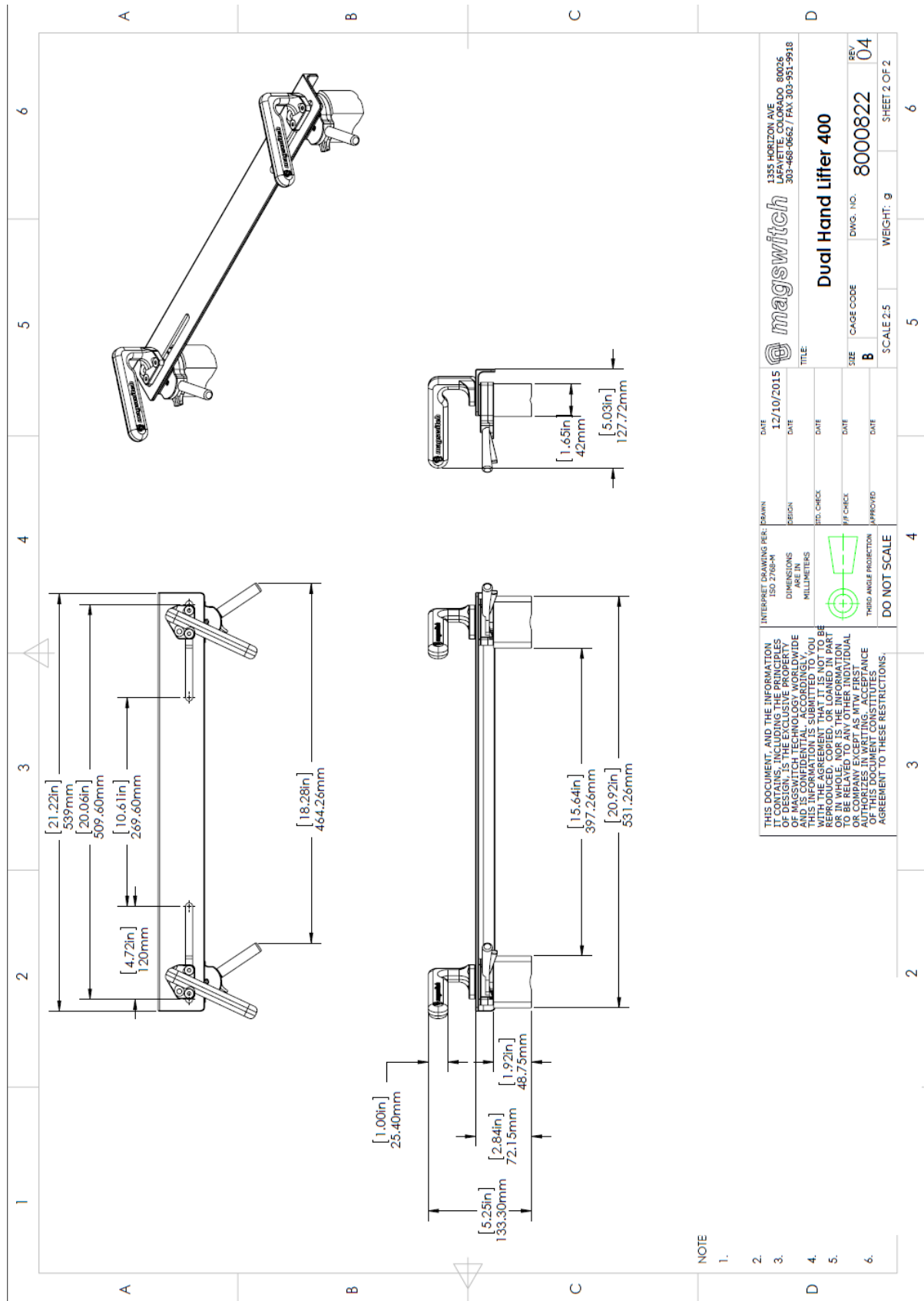


Part Number 1101209  
 Revision Date: March 29, 2016

\* Max Breakaway determined in laboratory environment on 2" thick SAE1018 Steel with surface roughness 63 micro inches. Many factors contribute to the actual breakaway force in each application. Always test the magswitch in each application before deployment. Refer to the magswitch information booklet for more information.



Part Number 1101209  
 Revision Date: March 29, 2016



NOTE

- 1.
- 2.
- 3.
- 4.
- 5.
- 6.

THIS DOCUMENT, AND THE INFORMATION IT CONTAINS, INCLUDING THE PRINCIPLES OF MAGSWITCH TECHNOLOGY, IS CONFIDENTIAL AND IS NOT TO BE REPRODUCED, COPIED, OR LOANED IN PART OR IN WHOLE, FOR THE INFORMATION OF ANY INDIVIDUAL OR COMPANY EXCEPT AS MTW FIRST AUTHORIZES IN WRITING. ACCEPTANCE OF THIS DOCUMENT CONSTITUTES AGREEMENT TO THESE RESTRICTIONS.

INTERPRET DIMENSIONS PER: DRAWN TO ISO 2768-AS  
 DIMENSIONS IN MILLIMETERS  
 THIRD ANGLE PROJECTION  
 DO NOT SCALE

DATE	12/10/2015	DESIGNER		DATE	
DATE		ITD. CHECK		DATE	
DATE		FF. CHECK		DATE	
DATE		APPROVED		DATE	

**magswitch** 1355 HORIZON AVE  
 LAFAYETTE, COLORADO 80036  
 303-468-0662 / FAX 303-951-9918

**Dual Hand Lifter 400**

SIZE: **B** CASE CODE: **8000822** REV: **04**  
 SCALE: 2:5 WEIGHT: 9 SHEET 2 OF 2