



Magswitch Technology, Inc.
 1335 Horizon Ave
 Lafayette, CO 80026
 Magswitch.com.au
 303-468-0662

Magswitch 400 Fixed Manual Hand Lifter

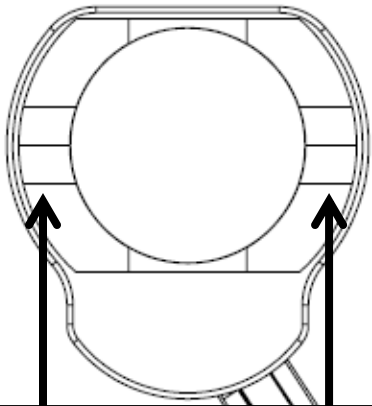
P/N: 8100810

The Magswitch fixed manual hand lifter series allows for safe and convenient lifting. With an ergonomic fixed handle, the 400 hand lifter features a single 90° side-actuation lever with a locking mechanism that prevents accidental release. It is perfect for handling sharp or dirty steel or scrap. It can be used for dragging or handling small steel sheet.



WARNING!
Do Not Operate Unless In Contact With Ferrous Target

SPECIFICATIONS	
P/N: 8100810 - MAGSWITCH 400 FIXED MANUAL HAND LIFTER	
Max Breakaway*	390 lbs/177 kg
Full Saturation Thickness	3/8in / 9.5mm
Net Weight	2.4 lbs/1.1 kg
Overall Height	5.0in/127.0mm
Magnetic Pole Footprint	67mm x 42 mm



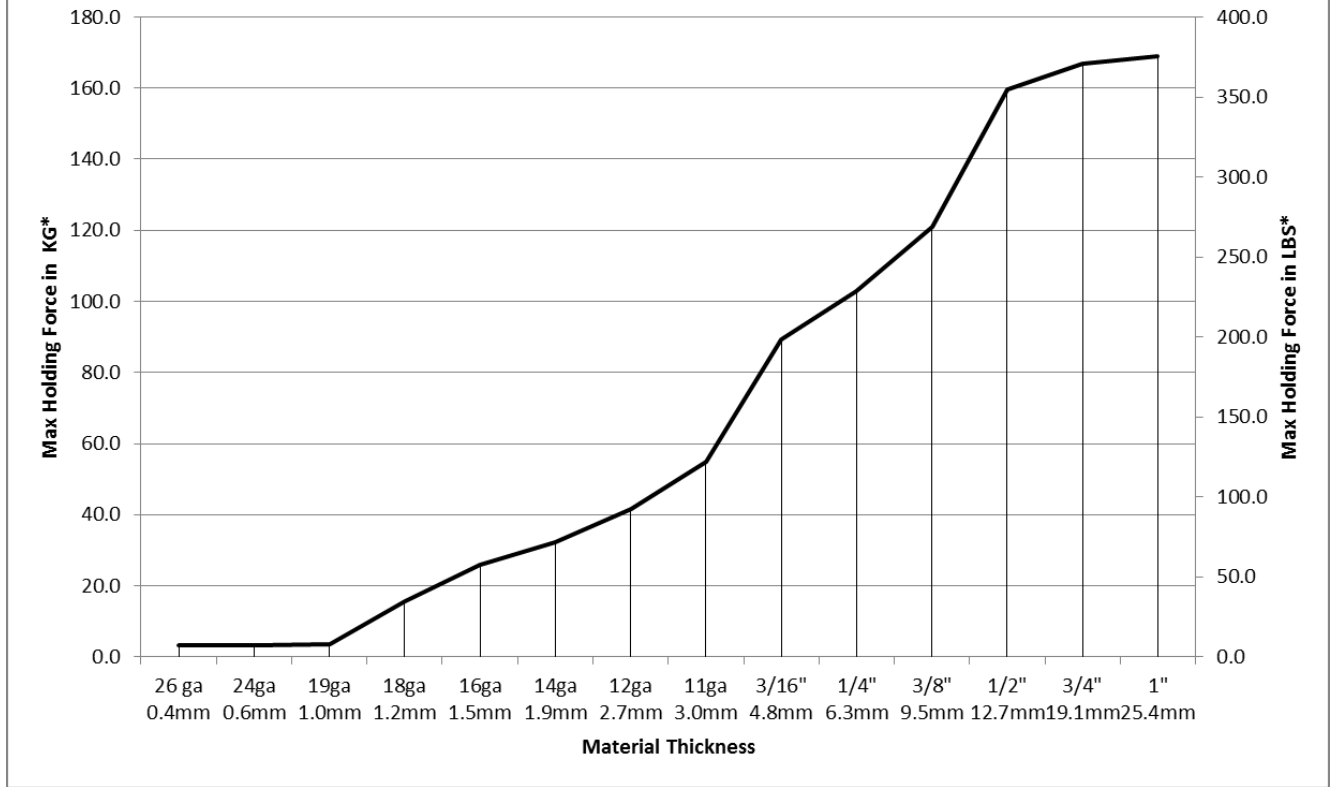
WORKING SURFACE



Part Number 1101132
 Revision Date: March 24, 2015

* Max Breakaway determined in laboratory environment on 2" thick SAE1018 Steel with surface roughness 63 micro inches. Many factors contribute to the actual breakaway force in each application. Always test the magswitch in each application before deployment. Refer to the magswitch information booklet for more information.

Magswitch 8100810 Breakaway Data vs. Thickness

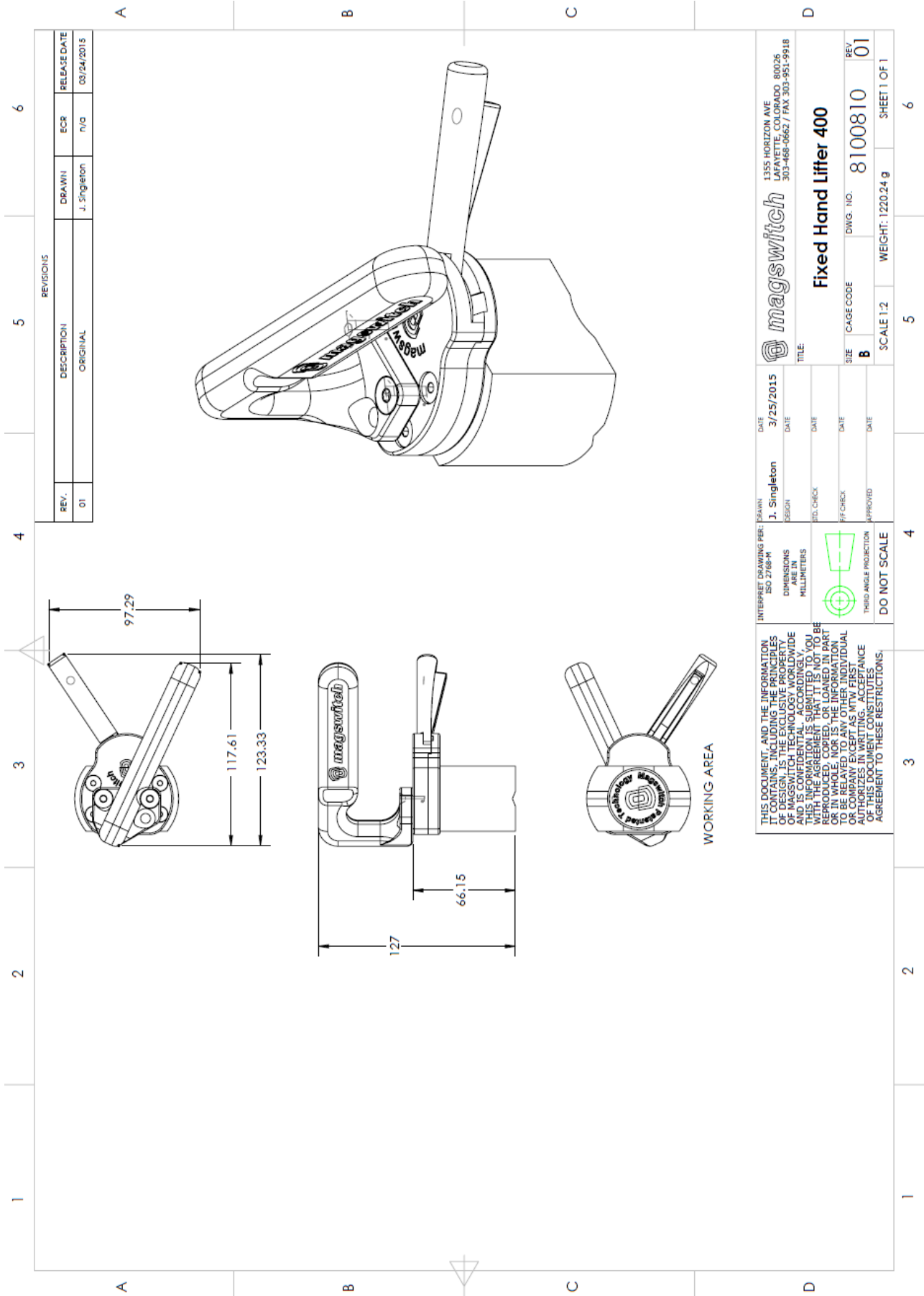


Part Number 1101132
Revision Date: March 24, 2015

* Max Breakaway determined in laboratory environment on 2" thick SAE1018 Steel with surface roughness 63 micro inches. Many factors contribute to the actual breakaway force in each application. Always test the magswitch in each application before deployment. Refer to the magswitch information booklet for more information.



Part Number 1101132
 Revision Date: March 24, 2015



REVISIONS			
REV.	DESCRIPTION	DRAWN	RELEASE DATE
01	ORIGINAL	J. Singleton	03/24/2015

DATE		3/25/2015	
DESIGN	J. Singleton	DATE	
DIMENSIONS	ISO 2768-M	DATE	
MILLIMETERS		DATE	
THIRD ANGLE PROJECTION		DATE	
DO NOT SCALE		DATE	

THIS DOCUMENT, AND THE INFORMATION IT CONTAINS, INCLUDING THE PRINCIPLES OF MAGSWITCH TECHNOLOGY WORLDWIDE AND IS CONFIDENTIAL. ACCORDINGLY, THIS INFORMATION IS SUBMITTED TO YOU ON A NON-REPRODUCTION BASIS. IT MAY BE REPRODUCED, COPIED, OR LOANED IN PART OR IN WHOLE, NOR IS THE INFORMATION TO BE RELAYED TO ANY OTHER INDIVIDUAL OR ORGANIZATION WITHOUT THE WRITTEN AUTHORIZATION OF MAGSWITCH. ACCEPTANCE OF THIS DOCUMENT CONSTITUTES AGREEMENT TO THESE RESTRICTIONS.

DATE		3/25/2015	
DESIGN	J. Singleton	DATE	
DIMENSIONS	ISO 2768-M	DATE	
MILLIMETERS		DATE	
THIRD ANGLE PROJECTION		DATE	
DO NOT SCALE		DATE	

1355 HORIZON AVE
 LAFAYETTE, COLORADO 80026
 303-468-0662 / FAX 303-951-9918

magswitch
Fixed Hand Lifter 400
 TITLE:
 SIZE: B CAGE CODE: DWG. NO: 8100810 REV: 01
 SCALE: 1:2 WEIGHT: 1220.24 g SHEET 1 OF 1